

# Cultural Heritage

---

## 1.1 Cultural Heritage

### Policy Context

#### PPG 15 – Planning and the Historic Environment

This PPG provides a full statement of Government policies for the identification and protection of historic buildings, conservation areas, and other elements of the historic environment. It explains the role played by the planning system in their protection. It complements the guidance on archaeology and planning given in PPG 16.

#### Objectives, Targets and Indicators

Objectives are for effective protection for all aspects of the historic environment. Consider opportunities to re-use derelict transport infrastructure.

#### PPG 16 – Archaeology and Planning

This guidance is for planning authorities in England, property owners, developers, archaeologists, amenity societies and the general public. It sets out the Secretary of State's policy on archaeological remains on land, and how they should be preserved or recorded both in an urban setting and in the countryside. It gives advice on the handling of archaeological remains and discoveries under the development plan and control systems, including the weight to be given to them in planning decisions and the use of planning conditions.

#### Objectives, Targets and Indicators

Development plans should reconcile the need for development with the interests of conservation including archaeology. Detailed development plans should include policies for the protection, enhancement and preservation of sites of archaeological interest and of their settings.

#### The Historic Environment: A Force for Our Future

This statement sets out the intention of the Government to protect the historic environment recognising its major contribution to the economy in rural and deprived communities as well as in traditional economic centres. It also states the need for the development of new policies to further realise economic and educational potential.

#### Objectives, Targets and Indicators

The historic environment should be protected and sustained for the benefit of our own and future generations.

#### Regional Spatial Strategy (RSS14) of the East of England (Draft Revision)

Bedfordshire now lies within the East of England region for planning purposes. RSS14 is based on the principles of the UK's Strategy for Sustainable Development and sets out a strategy to guide planning and development in the East of England to the year 2021. This includes the scale and distribution of provision for new housing and identifying priorities for the environment, transport, infrastructure, economic development, minerals and waste management. It aims to improve the quality of life and sets out proposals which will influence where people choose to work and live and how to move about the region. RSS14 is currently under review – the final RSS14 is due to be published in early summer 2007.

#### Objectives, Targets and Indicators

Maintain and enhance cultural diversity while addressing the distinctive needs of different parts of the region

#### **Luton Local Plan (2001 – 2011)**

The Local Plan is to guide development and the use of land. It contains policies and proposals for land use and transportation.

#### **Objectives, Targets and Indicators**

See policies ENV6, ENV 7 & ENV8 consider archaeology, listed buildings and conservation areas, respectively. Development must not have a detrimental affect on historic environment.

Not to allow developments to adversely affect a site of known or potential archaeological or historic interest.

To preserve or enhance the character of conservation areas and listed buildings.

#### **Mid Beds Local Plan (First Review)**

The Plan was adopted in 2004 and guides development and the use of land over the next 10 years. The policies and proposals for land use and transportation are used to give planning advice and form the basis for determining planning applications.

#### **Objectives, Targets and Indicators**

To protect and enhance the architectural and historic character of Mid Bedfordshire's towns and villages.

To protect and enhance the archaeological heritage of the District.

#### **South Bedfordshire Local Plan (Review Deposit)**

The Local Plan was adopted in 2004 and provides comprehensive planning guidance for development in the area up to the year 2011. It develops the policies and general proposals of the Structure Plan and relates them to precise areas of land in the area. It sets out policies for environmental planning and management, in particular relating to conservation and improvement of the environment, efficient use of land and resources and the management of traffic.

#### **Objectives, Targets and Indicators**

- Protect and enhance the built and historic environment.
- Preserve the historic and architectural heritage of the District.
- Protect all archaeological remains of importance with the District.
- Prevent development which may have an adverse affect on a Conservation Area.
- Protect from damage and wherever possible, to enhance, historic parks and gardens of local historic interest and amenity value in the District.

#### **Bedford Borough Council Development Plan Document (DPD): Core Strategy and Rural Issues Plan (Submission version)**

The Local Development Framework is a series of documents which will gradually replace the Local Plan and deliver the spatial planning strategy for Bedford. These will set out the Council's policies for meeting the community's economic, environmental and social aims for the future where they affect the development and use of land. Preparation of the Local Development Framework will be a continual process with new documents being prepared at different stages to ensure that they are up-to-date.

The Core Strategy will set out the long term vision and overarching policies for the Borough. Consultation is taking place in connection with preparing the 'Core Strategy and Rural Issues Plan'. The DPD was submitted to the Secretary of State on 3 July 2006 and a six week consultation period followed. An independent Inspector will be appointed in May 2007 to consider all representations

received in response to the consultation. It is expected that this DPD will be adopted in December 2007.

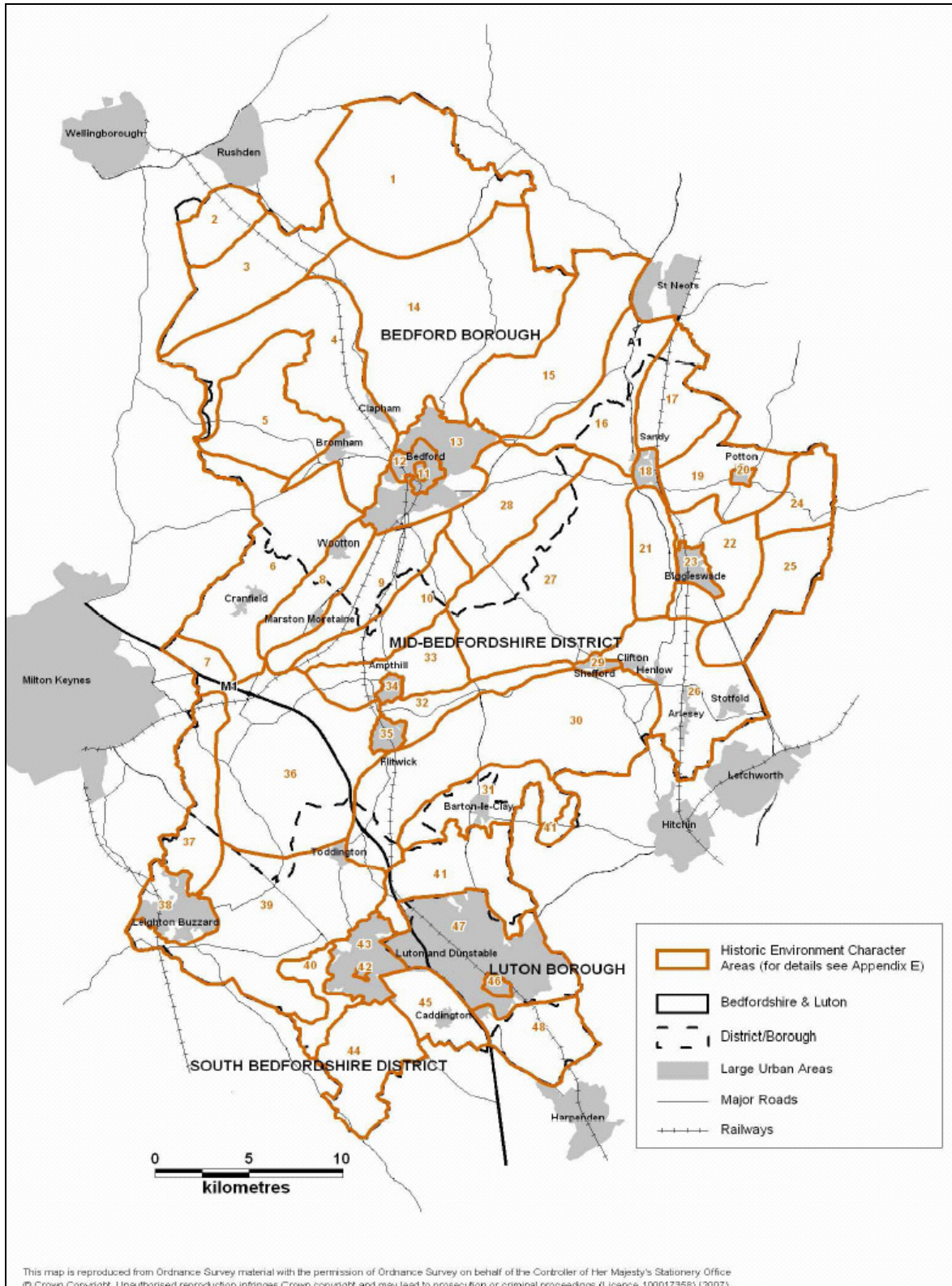
#### Objectives, Targets and Indicators

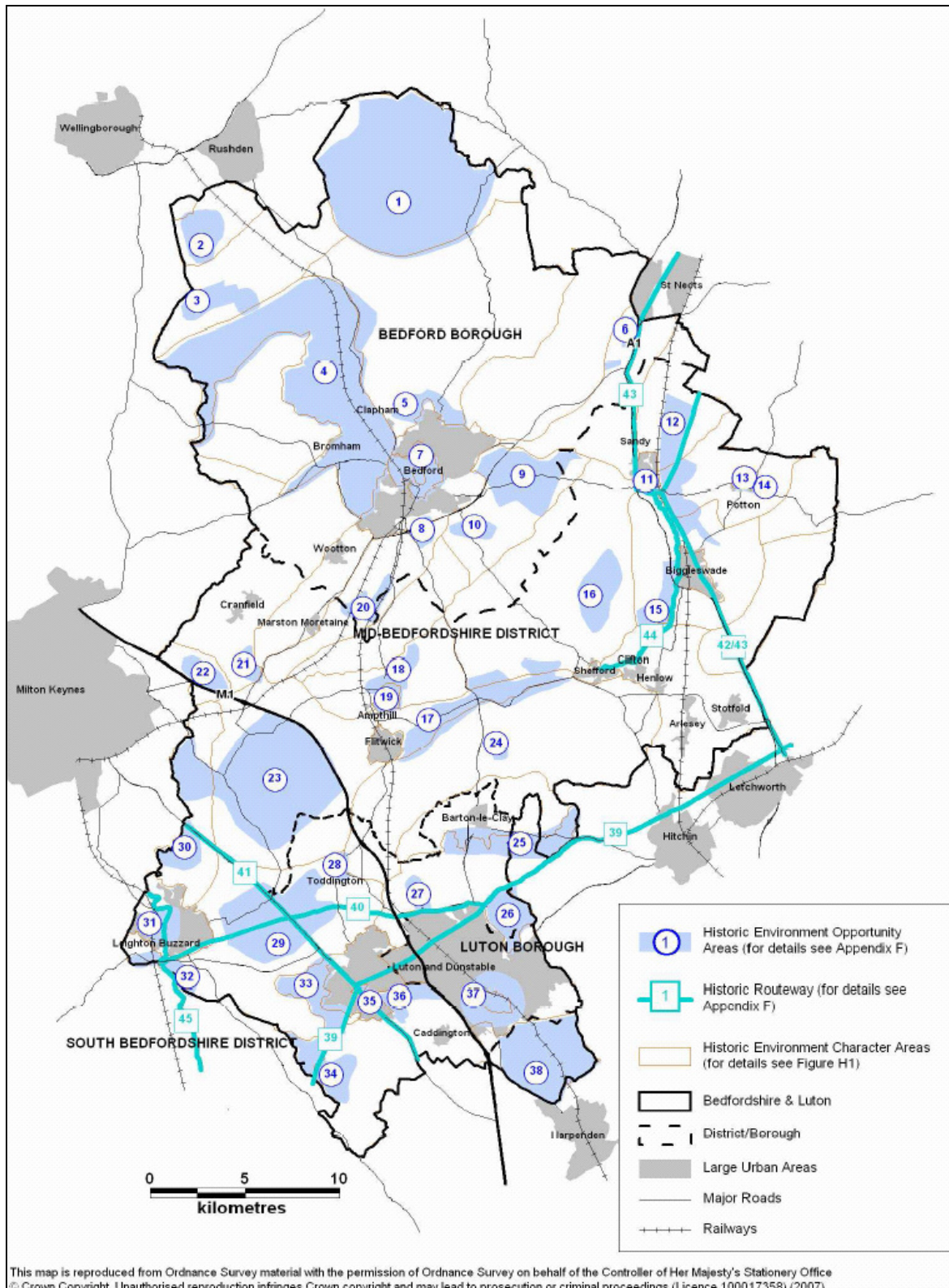
Protect and where appropriate enhance the character of conservation areas, scheduled ancient monuments, historic parks and gardens, listed buildings and other important historic or archaeological features.

## Baseline Review

### Architectural Heritage

- 1.1.1 This section reviews generic baseline cultural heritage in Bedfordshire and Luton. The next section of the topic paper outlines how these issues specifically relate to waste management.
- 1.1.2 Bedfordshire County Council Heritage and Environment Group are currently developing a Cultural Heritage Character Assessment for the County and draft results are expected in mid-2007. A summary forms part of the Bedfordshire and Luton Green Infrastructure Plan, published in February 2007.
- 1.1.3 Forty-eight Historic Environment Character Areas, covering the whole County, have been defined by the Bedfordshire County Council Heritage and Environment Service. These areas provide a spatial framework for understanding the County's historic environment assets – including the built heritage, archaeology and historic landscape. This project identifies character areas and opportunity areas - 85 conservation areas, 3000+ listed buildings and 22 registered historical parks and gardens. A more detailed Historic Environment Character Assessment of the county is now underway which will influence development and other changes. As part of the character assessment, it has not yet been possible to identify key designated assets meaningfully on the first map shown below, due to scale. However, these assets - which include historic parks and gardens, scheduled ancient monuments, listed buildings and conservation areas – were combined with undesignated assets to contribute to the historic environment character and opportunity areas shown in the second map below.





1.1.4 The Bedfordshire Historic Environment Character Assessment will provide detailed analysis and refine the identification and description of opportunity areas.

1.1.5 The specific opportunities within each of the Historic Environment Opportunity Areas/ Routeways are currently identified as enhancing the management, presentation, accessibility and interpretation of the historic environment in Bedfordshire & Luton, which can be summarised as:

- Historic routeways - Great Ouse Valley, Ivel Navigation, Great North Road/White Way, Watling Street, Icknield Way / Ridgeway, Theedway, Railways, Grand Union Canal
- History of agricultural development - extant ridge and furrow, earthworks in what is now woodland, influence of the Bedford Estate, the model farms, impact of steam ploughing
- Extractive industries- river valley gravels, brick pits, sand at either end of the Greensand Ridge, Totternhoe clunch, chalk, Fullers earth
- Brick making - initially varied and small-scale, Marston Vale then became the biggest brickfields in Europe producing Fletton bricks
- WW2 / espionage - Tempsford Airfield, Chicksands listening posts, Milton Bryan black propaganda, links to Bletchley Park, Shuttleworth Collection
- US 8th Air Force and RAF Airfields (such as at Podington/Santa Pod, Little Staughton, Tempsford, Thurleigh, Twinwood, Cranfield and Barton)
- Very varied pattern of rural settlement (historic and present-day)
- Industrial development - particularly engineering and agricultural engineering
- History of early man during the Palaeolithic period
- Designed landscapes and country houses
- Social history of immigration
- Great variety of building materials.

Not all of these can/will be influenced by waste planning within the county however they have been included for completeness.

1.1.6 Data in the table below has been taken from the *Bedfordshire Landscape Character Assessment Volume one: Countywide Study*. It identifies the industrial heritage and building vernacular found in the different landscape types. This information is particularly important as it is the potential change in existing character as a result of waste planning and management that will need to be assessed through the SA.

County Landscape Type	Types of Industrial Heritage	Building Vernacular
Arable Clay Plateau with tributaries	Airfields used & disused Intensive Arable farming Industrial Parks	Building Developments: Small scale Low density linear Walls: Red & buff brick (sometimes checkerboard pattern) & white render. Roofing: Thatch, slate & clay tiling
Wooded Wolds	Rural landscape	Building Developments: Small scale Low density nucleated & linear

County Landscape Type	Types of Industrial Heritage	Building Vernacular
		Walls: Limestone (honey-grey) Roofing: Thatch, & clay tiling - wide eaves
Limestone River Valley with Open Water	Limestone & Brick road & rail bridges Restored Gravel pits	Building Developments: Small scale & Large Scale Walls: Limestone (honey-grey) small settlements Red brick Large settlements Roofing: Thatch, & clay tiling
Clay River Valleys	Restored Sand and Gravel Workings	Building Developments: Few unifying characteristics Walls: Brick, render, weatherboard Roofing: clay & slate tiling
Settled and Farmed Clay Vales	Active Brick workings Clay pits Large scale industrial features chimneys, hangers and distribution warehouses	Building Developments: Small – medium scale Walls: Red & buff brick (sometimes checkerboard pattern) render, weatherboarding. Roofing: Clay tiling, thatch,
Wooded Greensand Ridge	Intensive Arable Farming Active and restored sand mineral workings (interspersed with woodland)	Building Developments: Small scale Walls: Red brick, white render. Roofing: clay tiling
Greensand River Valley	Market gardening Golf & Fisheries Pasture Aggregates Industry Military	Building Developments: Small scale linear Walls: Red brick, weatherboarding. Roofing: Thatch, clay tiling
Settled and Farmed Clay Hills	Rural landscape	Building Developments: Varying size nucleated Walls: Mix. Roofing: Mix
Chalk Escarpments	Numerous archaeological sites of national importance Pylons & communications masts	Building Developments: Varying size nucleated Walls: Mix. Roofing: Mix
Rolling Chalk Farmland	Chalk Quarries active and disused Pylons & communications masts	Building Developments: Mostly unsettled Small scale linear Walls: Mix.

County Landscape Type	Types of Industrial Heritage	Building Vernacular
		Roofing: Mix
Wooded Arable Chalk Plateau with Valleys	Intensive Arable Farming Horticulture	Building Developments: Mostly unsettled Small scale with green or common Walls: Red brick, flint, Roofing: Clay tiles
Arterial Chalk River Valleys	Rural landscape	Building Developments: Mostly unsettled Walls: Red brick, flint, Roofing: Clay tiles

### Archaeological Heritage

- 1.1.7 This section addresses baseline cultural and archaeological heritage of Bedfordshire and Luton. More data should become available with the publication of the Cultural Heritage Character Assessment for the County, expected in mid-2007 and will be added to the baseline at this point.

#### Luton

- 1.1.8 There are early monuments in the Borough and these include earthworks at Wauluds' Bank which date back to about 2500-2000 BC in the Neolithic period and Dray's Ditches to the Bronze and Iron Age times. They are related to the ancient route of Icknield Way which runs through the borough, and are protected as Scheduled Ancient Monuments.

#### Bedfordshire

- 1.1.9 Bedfordshire contains 150 Scheduled Ancient Monuments. The County Council has 20 Scheduled Ancient Monuments on its land & 130 are on private land. The County Council also has 18,000 plus archaeological sites, and historic landscape features, buildings and structures. The Cultural Heritage character assessment project will examine these sites to assist in developing appropriate management.
- 1.1.10 English Heritage has identified 2205 buildings and other features including burials, finds and other Archaeological features in Bedfordshire in its Pastscape database (an online database which lists data from English Heritage's National Monuments Record) <http://www.pastscape.org/>.

### Issues associated with Waste Management

- 1.1.11 The WLDF should be committed to PPG 15 and PPG 16 objectives for the effective protection and enhancement of the historic environment and archaeological remains through site selection.

- 1.1.12 The WLDF and the SA aim to ensure a strategic approach to managing the historic environment with relation to waste management proposals within the County. The approach taken is to ensure a strategic understanding of the resource to provide the context for the archaeology of individual sites and allow its value and significance to be assessed more effectively.
- 1.1.13 Waste management facilities, waste transport and ancillary works can destroy artefacts and sites of cultural and archaeological heritage. The main indirect effects of waste management are:
- General reduction in the 'legibility' of the archaeological landscape caused by the interruption of features that extend beyond the footprint of the development.
  - Impact of traffic on historic buildings/areas and historic environment character.
  - Impact on historic environment component of green infrastructure.
- 1.1.14 The long-term setting and character of an historic monument, archaeological landscape or listed building might be affected by waste management. Apart from visual aspects, this may detract from amenity uses resulting from the disruption of rights of way and access, increased noise and heavy traffic, or impact on character, appearance, interest and settings of designated and undesignated historic assets.

## Trends

- 1.1.15 With the United Kingdom's high density of historic buildings and archaeology there is always a potential conflict between further development and the potential changes in character of areas and the degradation or destruction of sites or buildings of historic importance. However the requirements for developers to undertake archaeological surveys and if necessary undertake archaeological monitoring and investigations has meant that significant discoveries and finds have been made that historically would not have been discovered due to lack of resources.

## Scoping Consultation

### Key Issues and Implications for Waste Planning

- The SA must consider the impacts on Conservation Areas, Listed Buildings, Parks and Gardens of historic importance (nationally listed and local ones). These effects should be monitored as the plan is implemented.
- Bedfordshire's heritage is distinctive, diverse and fascinating. The county is noteworthy for, amongst other things, its large country houses and their parks and estate villages, an industrial heritage of brick and engineering works, and straw hat production, the remains of Roman and earlier river valley settlements, and prehistoric boundaries. Iconic and internationally important sites include the Cardington Airship Hangars and Woburn Abbey. 'Community heritage' – such as 19<sup>th</sup> century terraced streets or model villages built for employees – are also important. Local and sometimes quite modest heritage is a crucial part of places people live and work in, value and enjoy.

- Traffic created by waste management facilities can also have significant impacts on cultural heritage.

**Comments on the Objectives for the SA**

- The SA objectives must reflect the main impacts that waste management can have on heritage.

**Relevant objectives for the SA**

Taking into account all of the above information the following objectives and indicators have been chosen for the SA.

SA Objectives	Appraisal Questions Does the plan...
<ul style="list-style-type: none"> <li>• To identify important areas of archaeology or historic character and seek to avoid, preserve or enhance them</li> </ul>	<ul style="list-style-type: none"> <li>• Seek to preserve and where relevant enhance sites of built and archaeological heritage?</li> <li>• Aim to steer the impact of development (including the impact of traffic) away from archaeologically sensitive sites?</li> <li>• Preserve, manage or enhance the historic environment character and opportunity areas?</li> </ul>

**Sources of Data**

- [www.magic.gov.uk/website/magic/](http://www.magic.gov.uk/website/magic/)
- [www.english-heritage.org.uk](http://www.english-heritage.org.uk)
- [www.pastscape.org/homepage/textpage.asp](http://www.pastscape.org/homepage/textpage.asp)
- [www.bedfordshire.gov.uk](http://www.bedfordshire.gov.uk)
- [www.midbeds.gov.uk](http://www.midbeds.gov.uk)
- [www.bedford.gov.uk](http://www.bedford.gov.uk)
- [www.luton.gov.uk](http://www.luton.gov.uk)
- Bedfordshire & Luton Green Infrastructure Plan (February 2007)

**Data Gaps**

- 1.1.16 Cultural Heritage Character Assessment is to be published in mid-2007.